

WallStreet 2.0 EVOLUTION

User Guide



Contents:

- Getting Started	-----3
- The MetaTrader4 (MT4) Trading Platform	-----4
- Installing WallStreet 2.0 Evolution	-----7
- Activating WallStreet 2.0 Evolution	-----11
- Starting and Configuring WallStreet 2.0 Evolution	-----12
- WallStreet 2.0 Evolution Settings	-----15
- WallStreet 2.0 Evolution Brokers Spy Module	-----20
- Brokers Spy Module Settings	-----23
- WallStreet ASIA	-----24
- WallStreet ASIA Grid System	-----25
- WallStreet ASIA Settings	-----27
- WallStreet Recovery PRO	-----29
- WallStreet Recovery PRO Settings	-----29
- WallStreet GOLD Trader	-----31
- Advanced Time Management System Settings	-----32
- Risk Management Hints	-----33
- How to back-test WallStreet 2.0 Evolution	-----34
- Email and Mobile Push Notifications	-----36
- WallStreet 2.0 Evolution for cTrader platform	-----38
- Terms of use and risk disclosure	-----39

GETTING STARTED

Do not EVER use two instances of the robot, or any combination of robots with identical magic numbers on a same account!!!

For a comprehensive information regarding the **recommended**, the **supported currency pairs** and for the **alternative settings**, please visit the "Settings" section in your members area.

If you decide to trade on more currency pairs at the same time, you may consider reducing the risk for each pair (using AutoMM=1-2% for example).

Before installing WallStreet 2.0 Evolution on your computer and commencing trading on a real account, please read this carefully: it may be crucial for your future profits.

Trading forex entails risk and each instance of negligence or inattention may lead to significant loss!

- 1. We strongly recommend that you operate a demo account before trading with real money.** This will help you become familiar with the way WallStreet 2.0 Evolution operates before you commit genuine funds to a real money account.
- 2. Please be exceptionally careful when determining trading volumes and setting automatic risk management parameters!**

3. If you suspect that WallStreet 2.0 Evolution might be operating incorrectly, please halt operations and contact us immediately!

WHAT YOU MUST KNOW BEFORE USING **WALLSTREET 2.0 EVOLUTION**

- WallStreet 2.0 Evolution is compatible with all MetaTrader 4 brokers, as well as with brokers using ECN-type order fulfilment. You do not need to change any settings.
- WallStreet 2.0 Evolution automatically recognises whether your broker offers four or five-digit quotes. You do not need to change any settings. You do not need to multiply TakeProfit and StopLoss values by 10 if your broker offers five-digit quotes.
- We do not recommend that you launch and close your trading terminal too often. Ideally, it should work without interruption from market opening on Monday to closure on Friday.
- For problem-free operation, use a computer with a minimum configuration: 1.5 GHz processor, 1 GB RAM, and Windows XP, Windows Vista, or Windows 7 operating system.
- Maintaining a stable internet connection is of the essence to ensure reliable WallStreet 2.0 Evolution operation.
- It is the spreads offered by your broker that chiefly determine how much profit you can make by using WallStreet 2.0 Evolution. The recommended spread for EURUSD is under 2 pips, for GBPUSD under 3 pips, and for USDJPY under 2 pips.
- Be on the lookout for brokers who steal pips and who try to fulfil each order at a price which is less favourable to you by 1 or 2 pips. This way, advertised 1 pip narrow spreads can easily work out at 3 or 5 pips, thus reducing profits made by WallStreet 2.0 Evolution. Be particularly cautious of new brokers who advertise aggressively on the internet.

The MetaTrader4 (MT4) Trading Platform

WallStreet 2.0 Evolution operates within the MetaTrader4 trading platform. MT4 is a free trading platform available through most forex brokers.

If you do not have MT4 installed on your computer, you can download a copy by going to one of the following brokers and requesting a demo account:

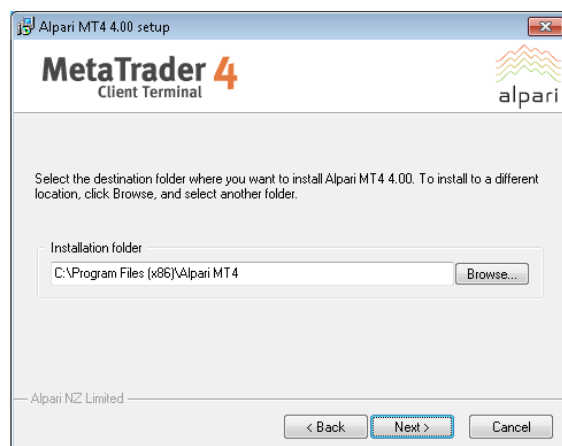
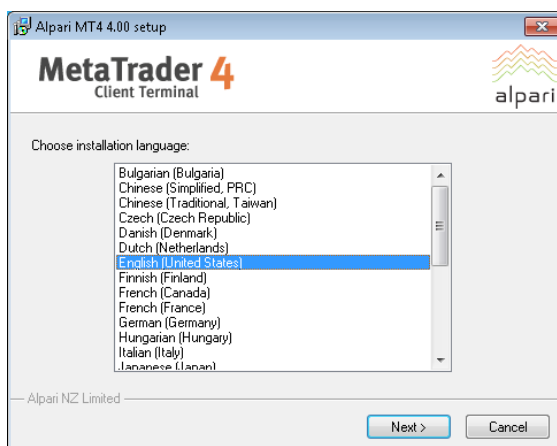
www.thinkforex.com
www.tickmill.com
www.pepperstone.com
www.hfeu.com
www.alpari.ru

This list is for reference only. We are not affiliated with any broker.

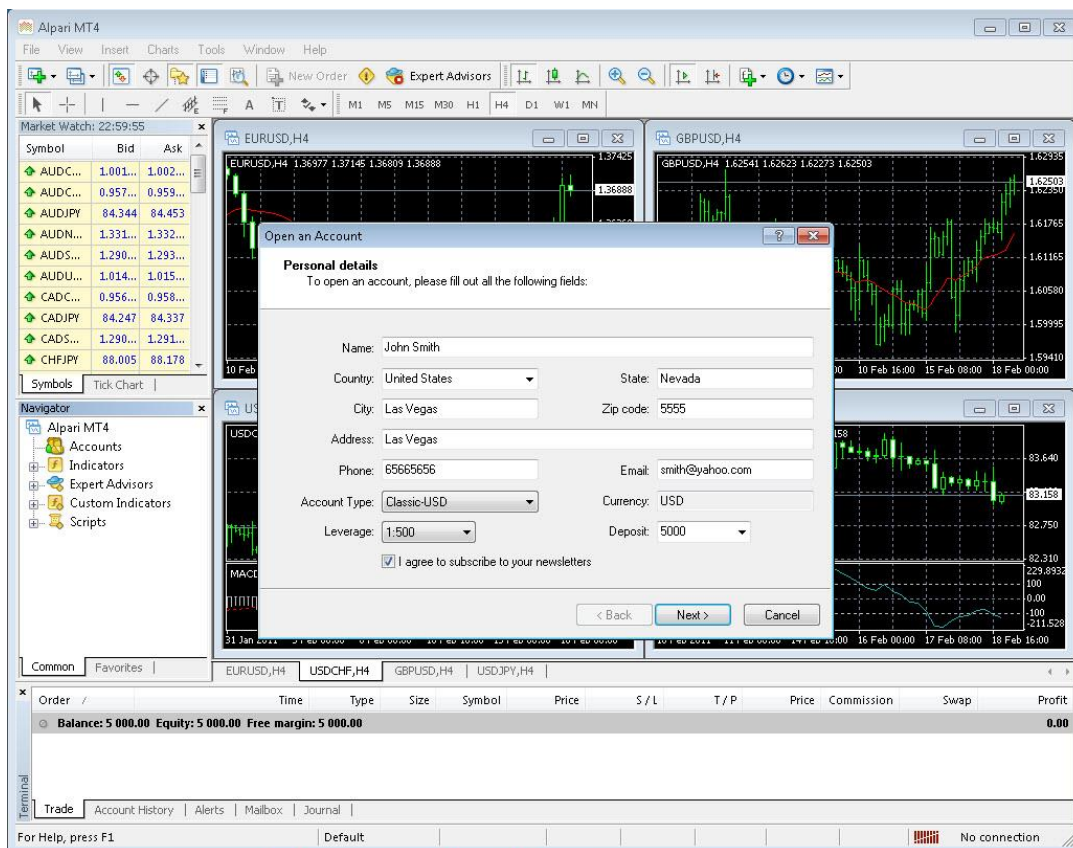
We cannot stress enough, how important is to choose a decent, reputable FOREX broker with competitive spreads and good trading conditions. If you are new to FOREX trading, make sure that you spend enough time in your own research for that matter, before investing any real money in any FOREX broker!

Installing MetaTrader 4

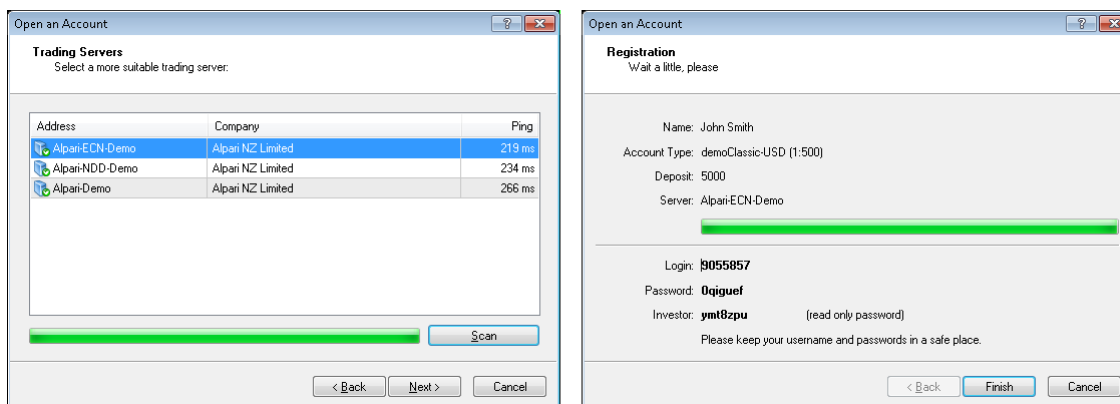
Browse through this section if you are familiar with MT4 and already have a broker account.

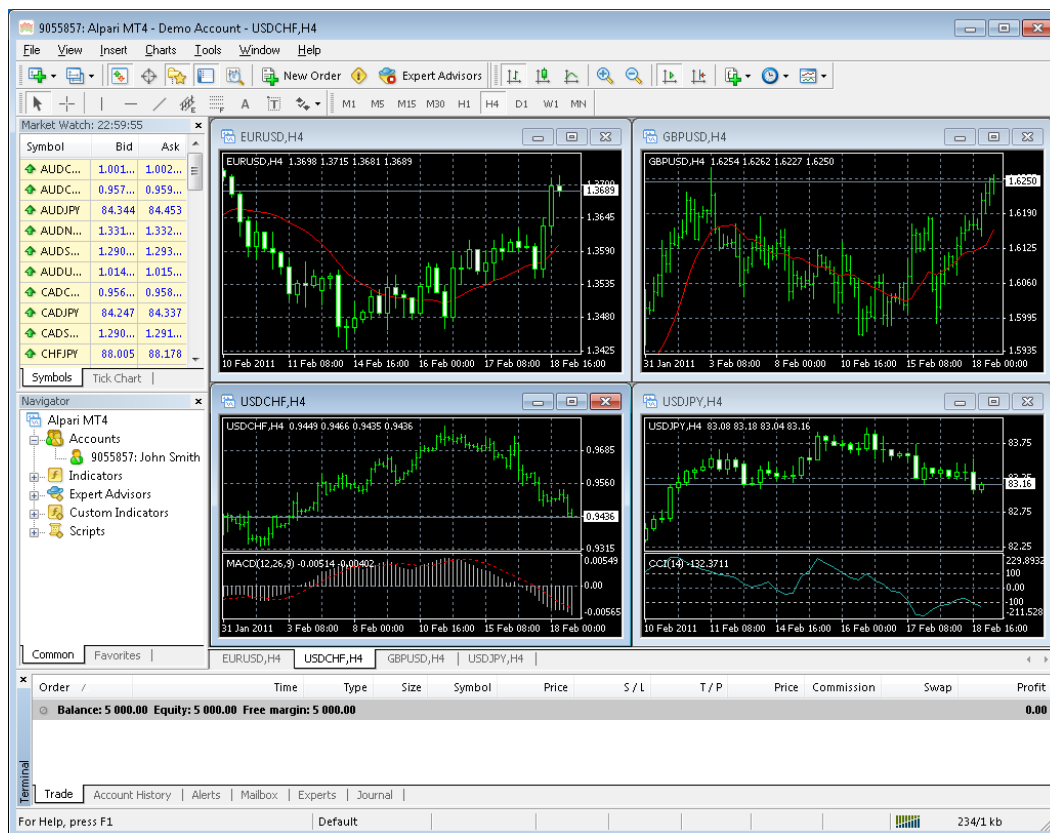


After completing installation, you will be asked to create a demo account. Fill in the details and select the amount of the account deposit. Enable *Agree to subscribe to your newsletters*, then click *Next*.



The program will ask you to select the trade server to which it should connect. Click *Next*. In the next window, click *Finish*.





Your demo account is opened. Close MT4 so that you can install WallStreet 2.0 Evolution.

INSTALLING WallStreet 2.0 Evolution

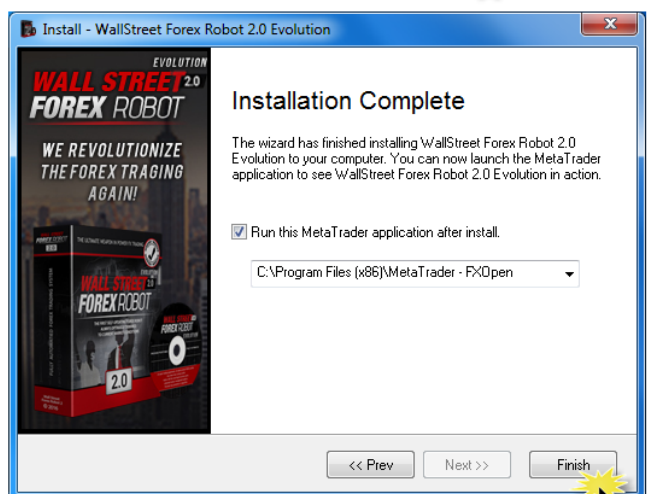
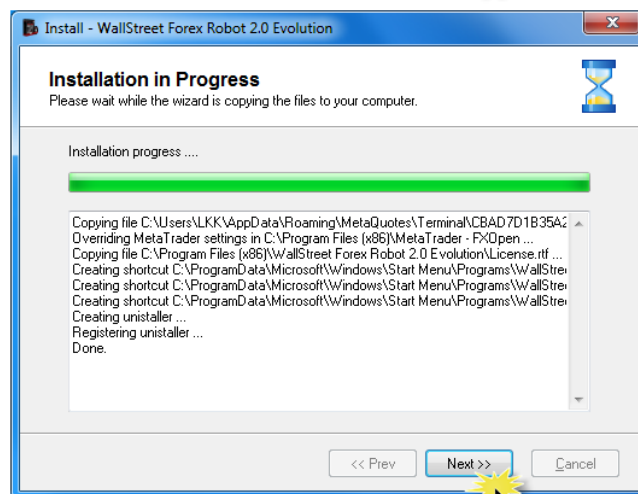
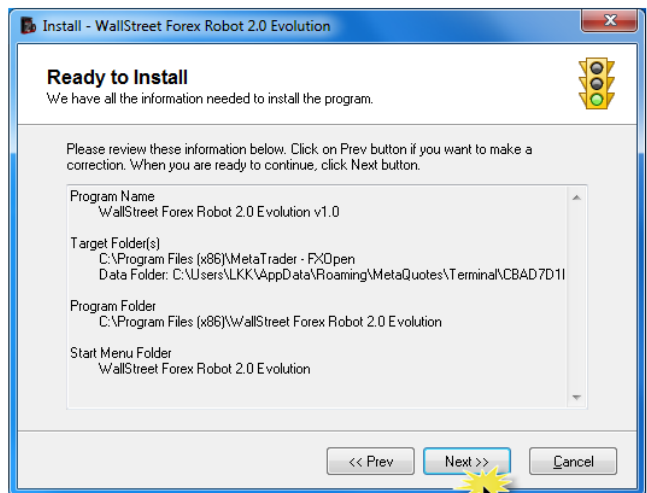
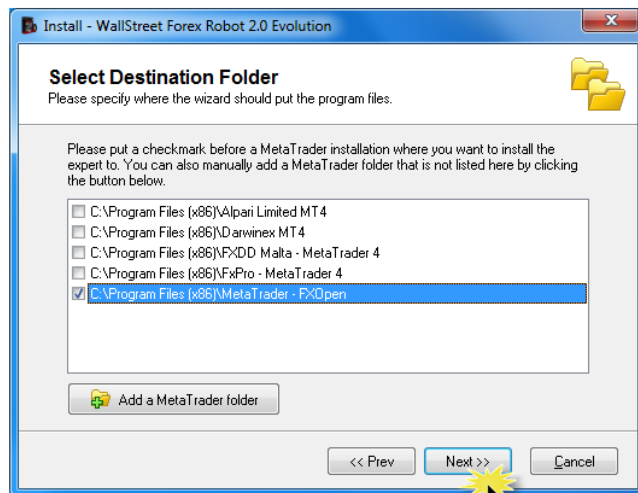
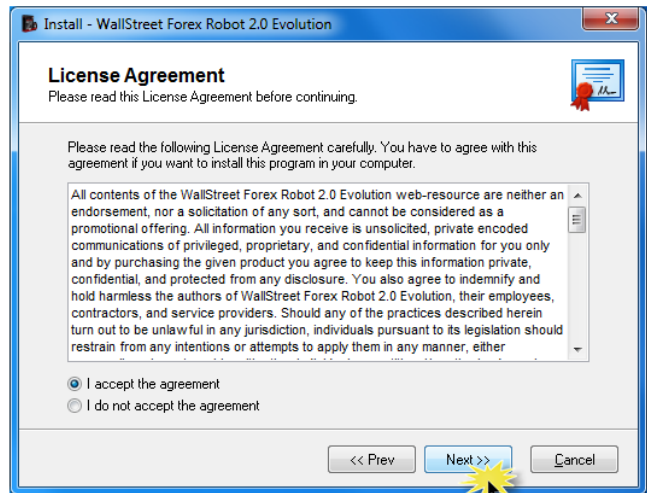
We offer you two ways of installing our software:

Automatic installation using WallStreet 2.0 Evolution.exe

- ❖ After logging into the member zone with the username and password provided, download "WallStreet_2.0_Evolution_Installer.exe" from your personal download page to a convenient location on your computer.

Install WallStreet 2.0 Evolution. During installation, select the installation folder of your MetaTrader4 terminal. This folder would usually have the name of y

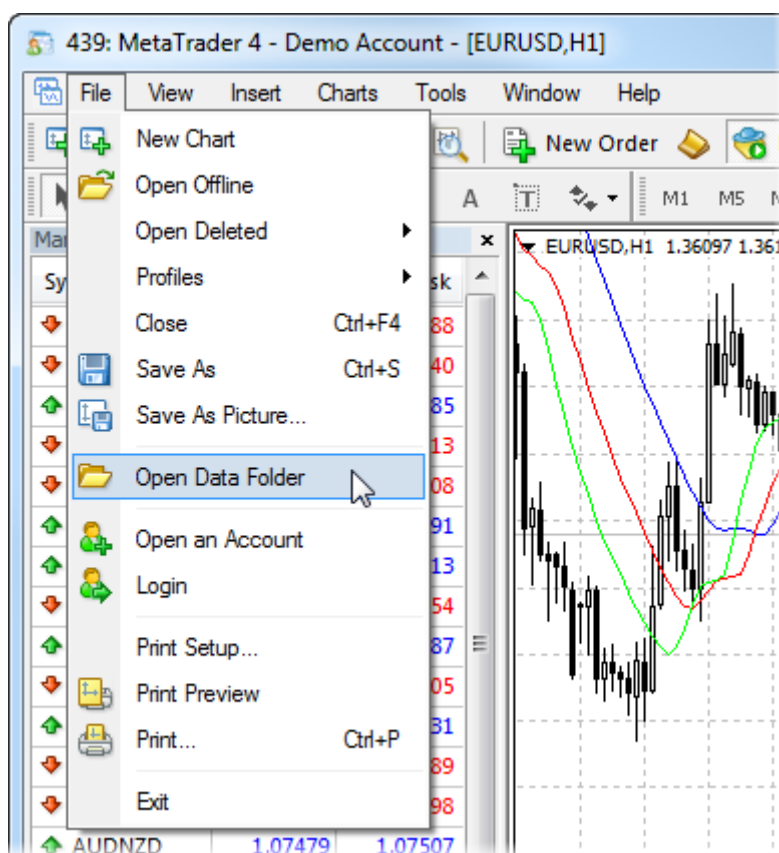
- ❖ our broker and would be found in C:\Program Files



Installation by Copying

1. After logging into the member zone with the username and password provided, download "**WallStreet_2.0_Evolution.ex4**", the "**WALLSTREET_EVO.dll**" and the "**ws2logo.bmp**" files from your personal download page to a convenient location on your computer.
2. **Identify your "Application Data" folder.**

First you need to locate your Application Data folder of the MT4. To do this, go to the File menu in the MT4 platform and click on "Open Data Folder" (check out the image below).

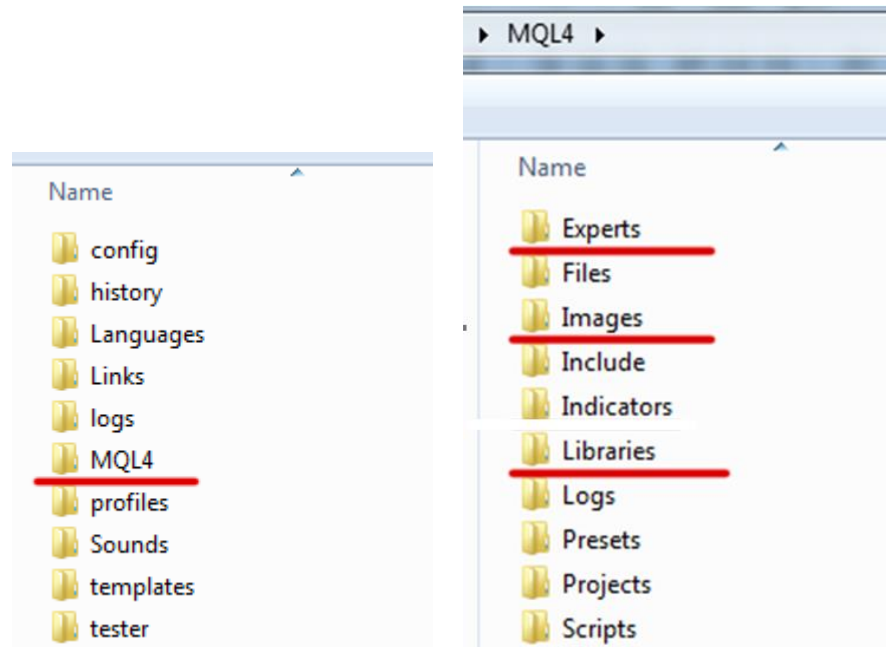


3. Place your robot files in the right location.

First thing to do is to open the MQL4 folder, which is in the "Application Data" folder (which you already see). The next steps are very easy:

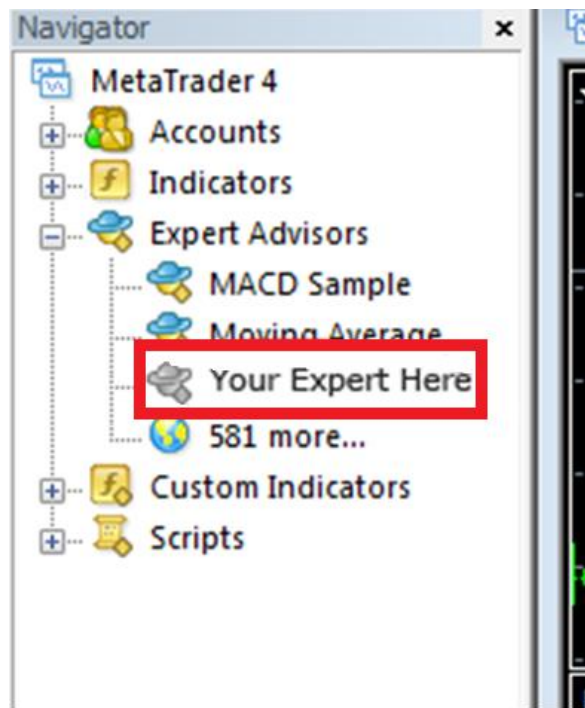
- Place the "**WallStreet_2.0_Evolution.ex4**" file in the "**Experts**" folder inside the "MQL4" folder.
- Place the "**WALLSTREET_EVO.dll**" file in the "**Libraries**" folder inside the "MQL4" folder.

- Place the "ws2logo.bmp" file in the "Images" folder inside the "MQL4"



4. Run the WallStreetForexRobot 2.0 Evolution.

After you have successfully placed the files in the correct folder, all you need to do is to restart your MT4. If you have done everything correct, the EAs should appear in the "Navigator" Tab of your MT4.



ACTIVATING WallStreet 2.0 Evolution

You should activate your copy of WallStreet 2.0 Evolution for your demo and real accounts through our website. Login to our member zone and then find the account activation page. Type your account number into the input field and click Activate. Repeat this procedure for each account. You need to activate the demo accounts in the field for demo account activation, and the real money account in the real money account activation field.

Your WallStreet 2.0 Evolution licence is valid for an unlimited number of demo accounts and for one real money account. The licence is not tied to one computer. You are free to trade using your accounts on any computer at home, in the office, or VPS.

As well, you have an option to remove an account that you do not use and activate a new account on its place.

You should activate your demo or real account even if you wish to backtest WallStreet 2.0 Evolution.

Your online authentication procedure may take some time. If you see an "Online Authentication Problem!" alert, wait a couple of minutes and try again. If the problem persists, contact us at support@wallstreet-forex.com

REAL MONEY ACCOUNT ACTIVATION

Activate your real money account number

Real money account number:

#	Account Number
No active accounts still!	

DEMO ACCOUNT ACTIVATION

Activate your demo money account number

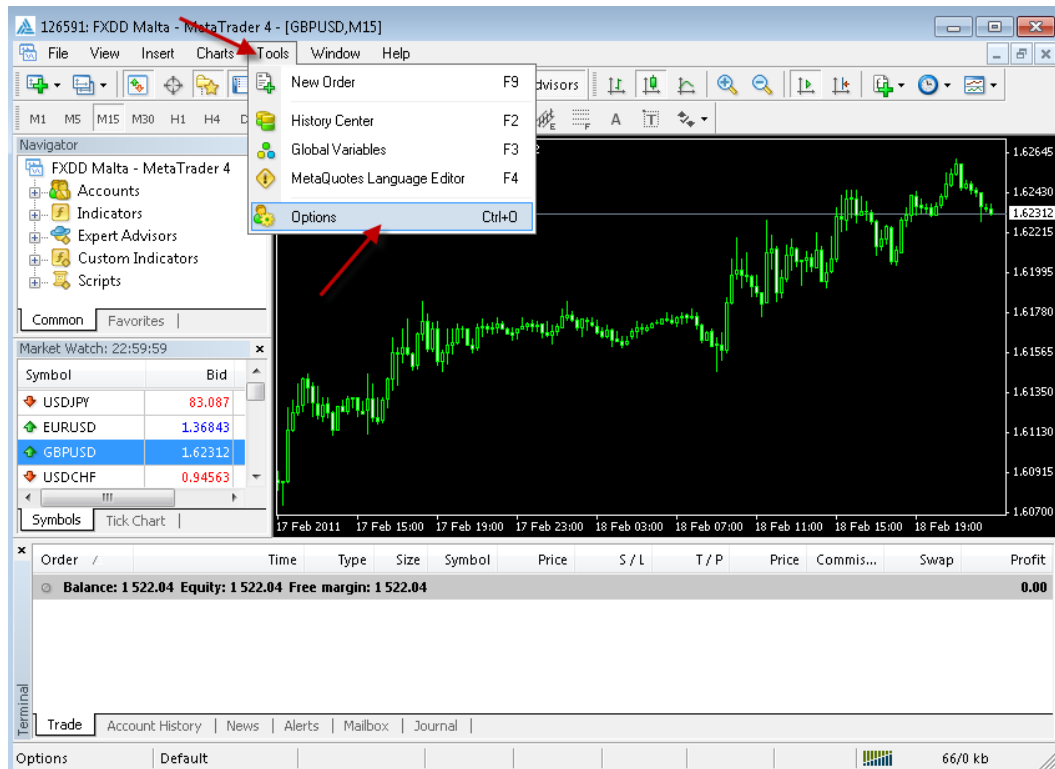
Demo account number:

#	Account Number	
1	9830045	<input type="button" value="Delete"/>
2	9855936	<input type="button" value="Delete"/>
3	9854758	<input type="button" value="Delete"/>

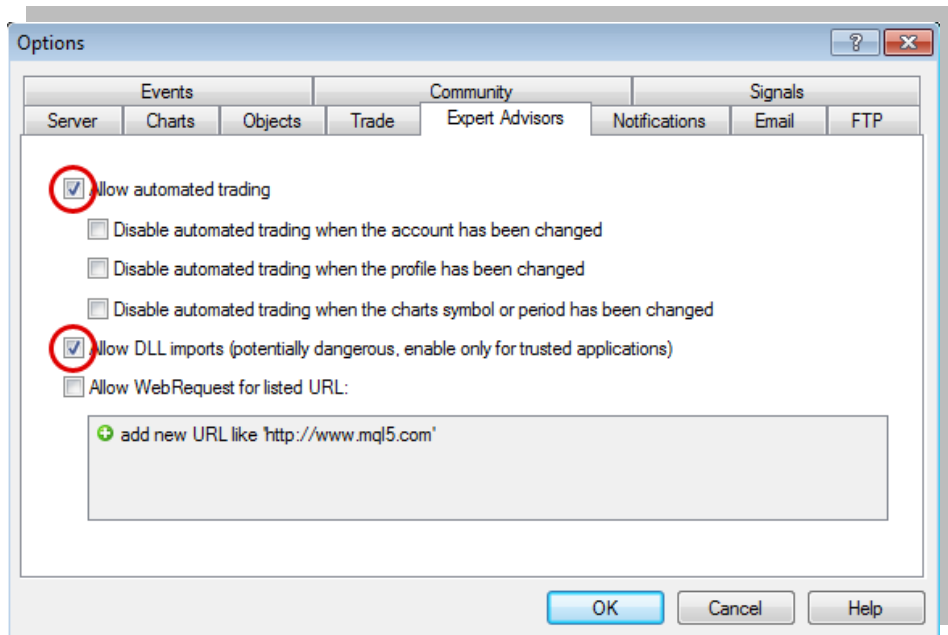
You can activate unlimited demo accounts.

STARTING AND CONFIGURING WallStreet 2.0 Evolution

After installing and activating WallStreet 2.0 Evolution, launch your MT4 terminal and click **Tools->Options**.



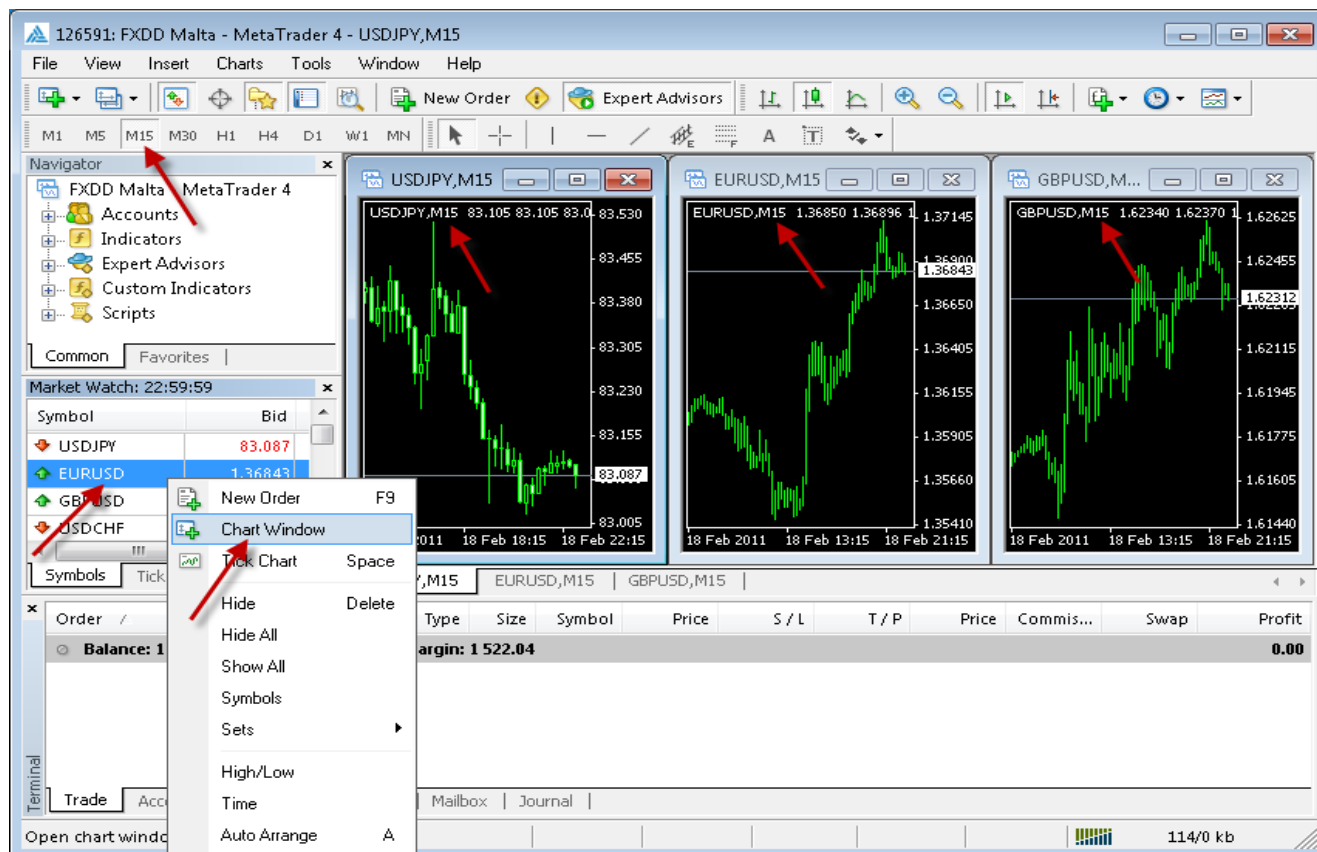
At this stage, make certain that you have checked and unchecked all the boxes exactly as shown below in order to ensure correct WallStreet 2.0 Evolution operation.



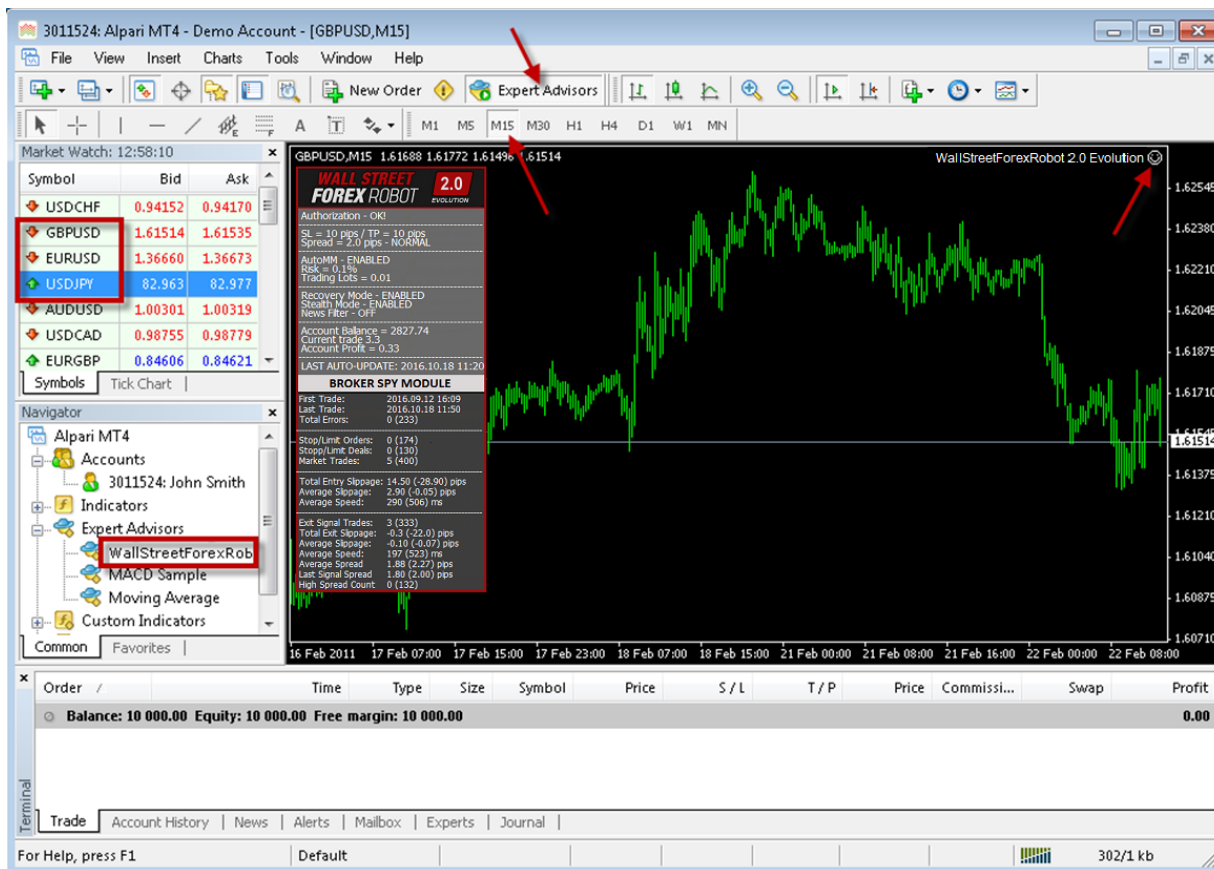
Now, open the graphs for the currency pairs you wish to trade, then select the 15-minute graph, M15.

*For a comprehensive information regarding the **recommended**, the **supported currency pairs** and for the **alternative settings**, please visit the "Settings" section in your members area.*

Select the 15-minute graph, M15.



Now you are ready to place WallStreet 2.0 Evolution on the chart. In the Navigator window, double click Expert Advisors to expand it. You should now see all Expert Advisors including WallStreet 2.0 Evolution. Now, you can right click WallStreet 2.0 Evolution and select Attach to a Chart, or alternatively simply drag WallStreet 2.0 Evolution onto the chart.



After placing WallStreet 2.0 Evolution on the chart, **you should see a smiley face in the upper right hand corner of your chart.** This means the robot is running. If you do not see a smiley face, make certain that under Properties on the menu bar, the Allow Live Trading box is checked. If it is checked and you still do not see a smiley face, go to Tools on the menu bar and select Options. A popup will appear. Select the Expert Advisors Tab and check both the Enable Expert Advisors box and the Allow Live Trading box.

You can enable or disable WallStreet 2.0 Evolution from the Expert Advisor button at any time.



WallStreet 2.0 Evolution

SETTINGS

You can edit WallStreet 2.0 Evolution settings by right clicking anywhere on the chart and selecting Expert Advisors -> Properties.

WallStreet 2.0 Evolution automatically updates its settings from our web server. This means that you can relax: your forex robot is always trimmed to prevailing market conditions.

Magic: a unique identifier through which WallStreet 2.0 Evolution recognises and manages its own positions. If you use other expert advisors on the same account, please ensure that each of them has a distinct unique identifier.

EA_Comment: you can type here a comment, if you wish to mark the WallStreet 2.0 Evolution trades.

MaxSPREAD: maximum allowed spread.

Slippage: maximum allowed slippage.

StealthMode true/false: a mode which conceals stoploss and takeprofit levels in program logic, making them invisible to brokers. If you use this mode, the stoploss and takeprofit orders are not located in the trading server. In this case, if your trading terminal is not connected, or the robot is not working, your orders would not be protected. **However, we are strongly encouraging using the StealthMode, because in some cases the visible StopLoss levels could be attacked tendentiously by algorithms that some unethical brokers could use.**

NEW EmergencyStopDist: this parameter ensures a second level of protection, when StealthMode is used. **At values greater than zero** it activates a second level of true (Emergency) StopLoss on a greater distance then the virtual hidden StopLoss is located. In such case the value of the new emergency StopLoss will be the sum of the EmergencyStopDist value plus the value of the hidden StopLoss.

As an example if StealthMode is used and the hidden "system" StopLoss is 60 pips and the EmergencyStopDist is 100 pips, then the emergency StopLoss will be placed 160 pips away from the trade entry price. The only purpose of this is to protect you from some extremely rare circumstances in which the market moves excessively and the EA does not manage to close by a market order on the actual "hidden" StopLoss level.

CloseOnlyOnProfit true/false: when this mode is enabled, positions close to system signals only, when they are in profit, or where stoploss may be reached. If CloseOnlyOnProfit= false /default/, positions close to system logic even it is on a loss.

NFA true/false: use "true" if your broker is NFA regulated.

No_Hedge true/false: use "true" if you wish to cancel all hedge trades.

NEW WinLargeFonts true/false: use "true" to adjust the robot information box display in case you are using the Windows Large Fonts.

NEW RefreshDays: this value manages the real-time auto-update interval in days

NEW PendingOrderDist: this value manages the new Pending (Stop/Limit) Orders functionality:

- If the value is zero (default) the robot will use only market orders.
- If the value is greater than zero (a positive value) the robot will use "Limit" orders with a distance from the market price equal to the **PendingOrderDist** value in pips.
- If the value is lower than zero (a negative value) the robot will use "Stop" orders with a distance from the market price equal to the **PendingOrderDist** value in pips.

Generally, we recommend using market orders, but we've designed this functionality to provide an additional flexibility to those our users, which would be interested to experiment. As an example, if you notice that your broker executes the market orders with a great slippage, you can try using Limit, or Stop orders. The Limit orders would help to open the trade on a most favourable price, but you can miss some of the trades. We recommend this functionality only for advanced traders, which are capable to make their own backtests and optimisations.

NEW StopLimitExpire: this value (in minutes) manages the pending orders expiration in case you are using the Pending Orders functionality.

StopLoss: distance to stoploss levels in standard (4 digits) pips.

TakeProfit: distance to takeprofit levels in standard (4 digits) pips.

SecureProfit: minimum profit to be guaranteed where the position's current profit is equal to the value of the SecureProfitTrigger parameter.

SecureProfitTrigger: the position's current profit (in pips) which would guarantee minimum profits equal to value of the SecureProfit parameter.

UseCustomPair true/false: if you wish to use WallStreet 2.0 Evolution on a unsupported currency pair, change **UseCustomPair=true**

UseSettingsFrom: if you wish to use WallStreet 2.0 Evolution on an unsupported currency pair, with this input parameter you can choose, which supported settings you wish to use. **It is not necessary to change this parameter if you use some of the supported currency pairs. It is only in case you use "UseCustomPair=true".**

FixedLots: the extent of the fixed trading volume. If you use **AutoMM>0**, the value of the FixedLots parameter does not matter.

AutoMM: automatic risk management activates at values greater than zero:

- Example 1: at AutoMM = 2, WallStreet 2.0 Evolution opens positions equal to 0.2 lots (20,000) given account extent of 10,000. This places 2 percent of the account extent at risk per individual transaction at a loss of 100 pips.
- Example 2: at AutoMM = 10, WallStreet 2.0 Evolution opens positions equal to 1 lot (100,000) given account extent of 10,000. This places 10 percent of the account extent at risk per individual transaction at a loss of 100 pips.

RecoveryMode true/false: when RecoveryMode is activated, an algorithm effectively compensates current drawdown through smooth increases of trading volumes. This mode is active only when AutoMM is greater than zero (AutoMM > 0). Before activating RecoveryMode, please bear in mind that it can significantly increase risk to your account. For this reason, RecoveryMode should be used at low values of the AutoMM parameter.

AutoMM_Max: the maximum permitted risk expressed as a percentage of the account per individual transaction, calculated on the basis of a 100 pip loss.

MaxAccountTrades: using this parameter you could limit the number of simultaneously opened trades in your account. The default value is zero, which means that by default this option is disabled.

NEW MaxAccountDD: the maximum allowed drawdown for the account in percent. The option activates at values greater than zero. *This option is based on the current drawdown, which is the difference between the current account balance and equity.*

MondayStartHour: The robot will start trading after this hour on Monday. If you want to set any custom value it must be between 0 and 23. To completely disable trading on Monday set MondayStartHour=24.

FridayExit true/false: if you wish to close all trades on Friday, you should use FridayExit=true

LastTradeHour: the robot can trade until the end of this hour on Friday (including this hour).

ExitHour: the robot will close all open positions at this hour on Friday.

If you decide to use the "**FridayExit**" option you should set "**LastTradeHour**" and "**ExitHour**" several hours before the market closing of your broker on Friday.

Avoid_News true/false - if you wish to use the news filter function, you should set **Avoid_News=true**

AutoGMT_Offset true/false - this parameter controls the GMT Offset calculation method. In most of the cases, the automatic GMT value is correct. However, in some cases, you may need to enter the GMT Offset by yourself. In this case, switch **AutoGMT_Offset** to **false** and enter the value you need in the **ManualGMT_Offset** parameter.

ManualGMT_Offset - in case you switch to **AutoGMT_Offset=false**, the value of this parameter should be the right GMT Offset of your broker (usually, the winter GMT offset). As well, in case you perform a backtest, you should enter here the correct GMT Offset for the historical data you use - otherwise, the backtest will be incorrect.

DST_Usage true/false - activates the automatic DST (Daylight Saving Time) correction.

Include_Medium_News true/false: if you also wish to avoid the medium impact news, you should set **Include_Medium_News=true**

Wait_Before_News: the number of minutes before the news event, during which trading will be switched off

Wait_After_News: the number of minutes after the news event, during which trading will be switched off

Important: *StopLoss and TakeProfit have default values of zero (0). When the default value is selected, WallStreet 2.0 Evolution uses StopLoss and TakeProfit values broadcast by our web server. If you wish to set your own StopLoss and TakeProfit values, simply input values different to zero. In such a case, WallStreet 2.0 Evolution shall use the StopLoss and TakeProfit values set by you.*

StopLoss values broadcast from our web server are usually in the range of between 100 and 200 pips. A reasonably broad StopLoss offers the WallStreet 2.0 Evolution system logic the opportunity of closing positions at optimum price levels, even when a loss may be made. Using a close StopLoss of the order of 30 to 60 pips would also be reasonable in some situations. In the general run of cases, this would reduce system drawdown, but would also reduce profits. In support of this, we would offer the following examples in the EURUSD currency pair at different StopLoss values:

Simulation period: 2005-2011:

When not using StopLoss, or where StopLoss is set at 300 or more pips, the results would be:

- Total net profit = 5590 pips
- Profit factor = 2.96
- Maximum drawdown = 320 pips

When setting StopLoss at 130 pips, the results would be:

- Total net profit = 5172 pips
- Profit factor = 2.54
- Maximum drawdown = 225 pips

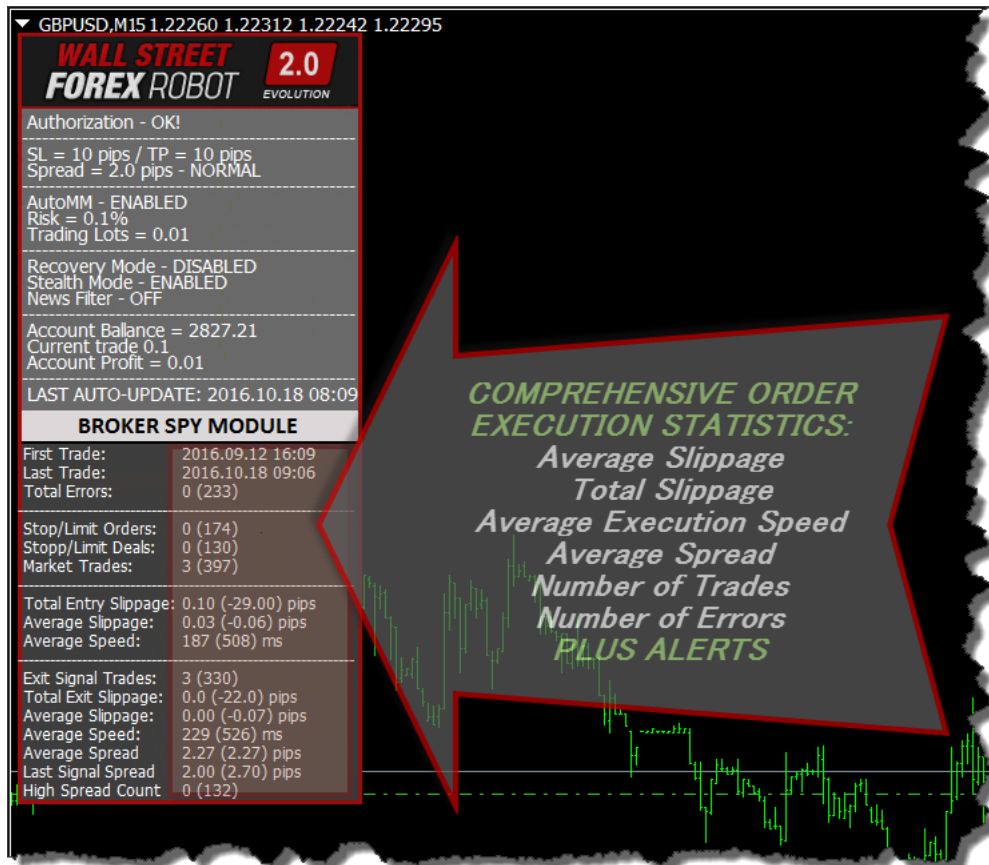
When setting StopLoss at 30 pips, the results would be:

- Total net profit = 3947 pips
- Profit factor = 1.88
- Maximum drawdown = 203 pips

WallStreet 2.0 Evolution

BROKER SPY MODULE

An insider look to the Broker behavior



The BROKER SPY MODULE compares the initial entry/exit price ordered from the robot, with the actual broker execution price. The difference between the ordered price and the broker execution price is the actual slippage.

If the broker is a correct one (*and you are not trading news, spikes or other extreme scalping techniques*) the slippage could be either positive, or negative. In long term the average slippage should be close to zero.

Unfortunately some brokers are literally stealing from their clients with tendentious negative slippage without any objective market reason. This is why we've developed the BROKER SPY MODULE – to provide to our users this extremely important information - an inside look to the broker's behavior.

The BROKER SPY MODULE aggregates the whole important information of all trades executed from the robot since it is started. All statistics is written on an external file, so even if you restart the robot multiple times the statistics will not be lost.

If you change the magic number of the robot, the robot will create a new file and the statistic will start from that moment. All statistics files from different magic number initializations will be kept with the used magic number in the name of the file. If you want to continue the statistics on some particular file you just need to initialize the robot with the same magic number as is in the file name. **The BROKER SPY MODULE statistics files are located in the MT4 Data Folder->MQL 4->Files.**

The BROKER SPY MODULE also provides important information about the average order execution delay. The order execution delay could be initiated from the broker in low liquidity conditions, or other objective reasons. Unfortunately in some cases some brokers could use this tendentiously to steal their clients. In other cases the orders delay could be caused by poor, or busy internet connection. However in all possible scenarios this is a very important information to know. It could be considered as normal if your order delay is below 1000 ms (1s) in normal market conditions, unless you do not get a tendentiously negative slippage.

In addition the BROKER SPY MODULE provides statistics for the average spread for all moments in which the robot initiate a trade signal.

Here is what exactly the BROKER SPY MODULE (BSM) statistics show:

The values in the brackets represent the extracted from the BSM history file data, from all previews initializations of the robot. The values outside the brackets represent the statistics since the last initialization of the robot.

First Trade – the date and time of the first trade from the statistics.

Last Trade – the date and time of the last trade from the statistics.

Total Errors – the total number of recorded errors for all type of orders

Stop/Limit Orders - the total number of successfully placed pending orders

Stop/Limit Deals - the total number of successfully activated pending orders

Market Trades - the total number of successfully executed market orders

Total Entry Slippage – the total slippage from all market and all activated pending orders in standard 4 digit pips.

Average Slippage – the average slippage from all market and all activated pending orders in standard 4 digit pips.

Average Speed – the average time delay for accepting of all type of orders in milliseconds (ms)

Exit Signal Trades – the total number of successfully executed exit market orders

Total Exit Slippage - the total slippage from all exit market orders in standard 4 digit pips.

Average Slippage – the average slippage from all exit market orders in standard 4 digit pips.

Average Speed - the average time delay for accepting of all exit market orders in milliseconds (ms)

Average Spread – average spread for all trading signals generated from the robot in standard 4 digit pips.

Last Signal Spread – the spread for the last trading signal generated from the robot

High Spread Count – the total number of cases in which the trade is canceled due to high spread, considering the **MaxSPREAD** setting.

Another great feature that the BROKER SPY MODULE provides is that you can use it as a test tool to check the behavior of your broker. For this purpose we've developed special "high frequency" trading settings. The only thing you need to do is to start WallStreet 2.0 Evolution **with the minimum possible lot size** and changing **UseCustomPair** to **"true"** and **UseSettingsFrom** to **GBPFST** (capital letters). This way the robot will execute about 100 trades a day. The average profit expectancy of these settings is minus one spread, so if you let the EA trade for one day (24 hours) the expected loss will be about \$15-25, but you will have an invaluable information about your broker behaviour. 20-30 trades are enough to get the information you need, so we recommend using this feature for several hours, under your supervision.

PLEASE, USE THIS FEATURE WITH CAUTION, DEFINING THE MINIMUM LOT SIZE AND BEING FULLY AWARE OF YOUR ACTIONS!!!

BROKER SPY MODULE

SETTINGS

BSM_Alerts true/false: use True, if you want to activate the Broker Spy Module alerts.

BSM_Alert_Open_Delay: the maximum allowed delay in milliseconds (ms) for opening new trades, above which the BSM will display an alert.

BSM_Alert_Open_Slippage: the maximum allowed slippage (in standard 4 digit pips) for opening new trades, above which the BSM will display an alert.

BSM_Alert_StopLimit_Delay: the maximum allowed delay in milliseconds (ms) for accepting pending (Stop/Limit) orders, above which the BSM will display an alert.

BSM_Alert_StopLimit_Slippage: the maximum allowed slippage (in standard 4 digit pips) for activating pending (Stop/Limit) orders, above which the BSM will display an alert.

BSM_Alert_Close_Delay: the maximum allowed delay in milliseconds (ms) for closing trades, above which the BSM will display an alert.

BSM_Alert_Close_Slippage: the maximum allowed slippage (in standard 4 digit pips) for closing trades, above which the BSM will display an alert.

WallStreet ASIA

It is important to be noted that we developed the **WallStreet ASIA** after we received many requests from our clients. The Asian session scalping performance is limited by the brokers' conditions, so we do not recommend using WallStreet ASIA on brokers with high spreads during the Asian trading session. As well, we do not recommend the usage of WallStreet ASIA by people who are not familiar with the specifics of this type of trading.

The EA comes in two versions: a regular and a simple one. When you install the EA, you will notice "**WallStreet_ASIA_Evo_vX.X**" and "**WallStreet_ASIA_Evo_vX.X_Simple**" under the Expert advisors section. The first EA is the regular version, while the second one is the "simple". Both the EAs are the same! The only difference is that the "simple" version has fewer parameters – the purpose of this is to ease some customers who are new to automated forex trading. Do **NOT** use both versions at the same time! Use only the one which is more suitable for you.

What you should be aware of, when using WallStreet ASIA on a real-money account:

- The performance of all Asian session scalpers depends on the spreads and the order execution by brokers. The best choice would be ECN brokers with tight spreads, fast order execution and good reputation.
- If you use WallStreet ASIA on a real account more than a month without success, you'd better cancel operation and try to find a broker with better trading conditions during the Asian trading session.

WallStreet ASIA works on **M15** time frame only!

Supported currency pairs and recommended spreads during the Asian trading session:

GBPUSD (spreads below 3 pips)

USDJPY (spreads below 2 pips)

GBPCAD (spreads below 8 pips)

GBPCHF (spreads below 8 pips)

EURGBP (spreads below 4 pips)

EURCHF (spreads below 3 pips)

USDCAD (spreads below 3 pips)

USDCHF (spreads below 3 pips)

WallStreet ASIA

GRID SYSTEM

The new version 1.4 (and above) of WallStreet ASIA comes with Grid System. The Grid System is developed to make WallStreet ASIA more profitable and less broker dependent. The goal was to make WallStreet ASIA perfect trading strategy for all forex traders. Because with the Grid System it can cover the needs and expectations of most of the forex traders.

The Grid System of WallStreet ASIA can be used in many ways. You can use it as normal grid, grid with martingale risk policy and in more aggressive way. No matter how you will use the Grid System it will improve WallStreet ASIA performance.

1. How to use the Grid System as a normal grid?

The only thing you have to do is to enable the Grid System. Just set **Grid_System=true** and then configure the Grid System parameters. The most important parameters of the Grid Systems are:

- **Grid_Max_Trades**
- **Grid_Distance**
- **Grid_Take_Profit**
- **Grid_Stop_Loss**

These four parameters are enough for making WallStreet ASIA a normal grid. You can read below the section " WallStreet ASIA Settings" to learn more about these four parameters.

What is typical for a normal grid? The typical is that the strategy open a few trades with specific distance between each trade and same lot size. You can control the number of trades by Grid_Max_Trades. You can define the distance by Grid_Distance. You can set take profit in pips by Grid_Take_Profit and you can set stop loss by Grid_Stop_Loss parameter.

With these four parameters you can run optimization to find the best configuration. Then you can use this configuration for live trading.

2. How to use the Grid System as a grid with martingale risk policy?

A Grid System with martingale risk policy means that every next trade will be with higher risk than the previous one. The advantage of this is the speed of closing the trades. Most of the times when a martingale risk policy is used with grid strategies all open trades are closing quickly on profit.

You can use the same four parameters from above plus the following parameters:

- **Grid_Risk_Multiplier**
- **Grid_Take_Profit_Money**

The first parameter `Grid_Risk_Multiplier` is used for risk policy. Read the section "WallStreet ASIA Settings" to learn more about this parameter and how to use it.

Since martingale strategies have complicated risk calculation you cannot simply use take profit in pips. Therefore, we have added additional parameter `Grid_Take_Profit_Money`. It is easier now to calculate your desired profit in your account currency. Low values of this parameters mean that the EA will close the grid trades quickly.

3. How to use the Grid System in more aggressive way?

Based on our tests and optimizations the Grid System can be used as more clever system too. What this means? Not always you need a few additional trades (grid) to compensate the initial losing trades. Sometimes you need only one with higher risk and opened at right moment.

This is possible with the Grid System of WallStreet ASIA. You need to configure the following parameters:

- **Grid_Max_Trades:** Usually you need to set 1.
- **Grid_Distance:** You need to set bigger distance. For example 70, 80 ... 100...
- **Grid_Trade_By_Signal_Only:** This should be always true.
- **Grid_Signal_Period:** Based on our tests the best results can be achieved with value 60. This is H1 time frame.
- **Grid_Risk_Multiplier:** You need to set at least 5. For different currency pairs this may vary.
- **Grid_Take_Profit_Money:** You need to set minimal profit in money for closing

both trades (the initial and the additional).

- **Grid_Stop_Loss_Money:** You need to set the stop loss in money if there is a big movement in wrong direction.

We have prepared .set files for each supported pairs with activated GRID System. You can find these .set files in the member area Download page:

<https://www.wallstreet-forex.com/account/download>

Have in mind that there are .set files for different cases with different combination of settings. You must test all .set files in strategy tester before to load them on your real money account. Test well and make sure that the .set files are OK with your account balance and risk you trade.

Why we have added GRID System in WallStreet ASIA?

The reason is simple: not all brokers offer good conditions during the Asian session. To help our users to achieve good results we have developed and added GRID System in the robot. When the GRID System is enabled WallStreet ASIA become less broker dependent and have better chance to close the trades on profit. GRID System could be risky for small accounts! In case you have a small account please trade with the default settings.

WallStreet ASIA SETTINGS

Only the settings that differs from the Wallstreet 2.0 Evolution are explained below.

MaxSpread (default value: **-1.0**) – the default maximum allowed value of the spread is provided by our server, but if you want to use your own value, then you can enter a positive value for the MaxSpread parameter.

Auto_GMT (default value: **true**) – this parameter controls the GMT Offset calculation method. In most of the cases, the automatic GMT value is correct. However, in some cases, you may need to enter the GMT Offset by yourself. In this case, switch Auto_GMT to **FALSE** and enter the value you need in the **Manual_GMT_Offset** parameter.

Calculate_DST (default value: **true**) - activates the automatic DST (Daylight Saving Time) correction.

Manual_GMT_Offset (default value: **2**) – in case you switch to Auto_GMT=FALSE, the value of this parameter should be the right GMT Offset of your broker (usually, the winter GMT offset). As well, in case you perform a backtest, you should enter here the correct GMT Offset for the historical data you use – otherwise, the backtest will be incorrect.

TicksTrade (default value: **false**) – this is an experts-only parameter, which activates execution on the trading logic on every price tick. By default, Wallstreet ASIA operates on M1 bar closing. All optimizations and tuning we made are based on M1 bar closing, so we do not recommend switching ON the TicksTrade mode, unless you are an expert capable in making your own 100% real tick tests and optimizations. However, the TicksTrade mode could provide very aggressive and profitable trading, but this depends greatly on the broker's trading conditions.

Channel_Period (default value: **0**) - the period of the custom, volatility based channel indicator. The default value is zero, which means that the value provided by our server will be used.

Entry_Break (default value: **0**) - break in pips of the channel border, which will trigger an opposite order execution. The default value is zero, which means that the value provided by our server will be used.

Exit_Distance (default value: **0**) - break in pips of the channel border, which will trigger a closure of the existing order. The default value is zero, which means that the value provided by our server will be used.

Exit_DistanceM1 (default value: **0**) - break in pips of the channel border on M1 timeframe, which will trigger a closure of the existing order. The default value is zero, which means that the value provided by our server will be used.

Start_Trade_Hour (default value: **-1**) - the hour of the day (Broker time) in which trading will be enabled. The default value is -1, which means that the value provided by our server will be used.

End_Trade_Hour (default value: **-1**) - the hour of the day (Broker time) in which trading will be disabled. The default value is -1, which means that the value provided by our server will be used.

WallStreet Recovery PRO

WallStreet Recovery PRO is a modified version of Wall_Street 2.0 Evolution. The EA trades the same way as the regular version does. The difference is in the way the opened trades are being managed. There are also few differences in the settings.

The principle of operation is the following - if the initial trade is not closed from the EA's trading logic and the price moves away with X pips loss, then the robot opens one (or more, depending on the currency pair) additional trade with a larger lot size. This way, the robot manages to compensate the loss from the initial trade and all trades are closed on overall profit.

We recommend using Wall_Street Recovery PRO on **EURUSD** and **GBPUSD**. For EURUSD, GBPUSD, USDJPY, AUDUSD, USDCHF, USDCAD and NZDUSD the robot has predefined settings. For other pairs, you have to run your own optimizations.

We suggest you to get familiar with Wall_Street Recovery PRO on a demo account before you switch to real-money trading.

We are obliged to stress that WallStreet Recovery Pro along with the larger profit potential, also carries larger risk for potential losses. We do not recommend using WallStreet Recovery Pro, if you are not fully aware and ready to accept the greater potential risk.

However, if you decide to use WallStreet Recovery Pro, we do not recommend risk greater than 1% for the initial trade (0.1 lot per 10,000 account), or AutoMM=1.

WallStreet Recovery PRO SETTINGS

Only the settings that differs from the Wallstreet 2.0 Evolution are explained below.

RecoveryAfter (default value: **0**) – The value is in pips. After the value is reached and the market conditions are appropriate, the robot will open an additional trade with

larger lot size in attempt to compensate the loss in the initial trade. By default, the value of this parameter is 0, which means that the value from our server will be used (it is visible in the EA's information box).

MaxRecoveryTrades (default value: **0**) – the maximum number of additional trades that could be opened during the recovery process. By default, the value of this parameter is 0, which means that the value from our server will be used (it is visible in the EA's information box).

RecoveryTradeLots (default value: **0**) – the lot size used for the additional recovery trades. By default, the value of this parameter is 0, which means that the value from our server will be used (it is visible in the EA's information box).

RecoveryMMC (default value: **0**) – This is the MM coefficient. The value entered should be greater than 0(zero). For example, if you set RecoveryMMC=5, and AutoMM > 0, the robot will open an additional trade with 5 time larger lot size. By default, the value of this parameter is 0, which means that the value from our server will be used (it is visible in the EA's information box).

RecoveryMinProfitDollars (default value: **-1**) – The minimum target profit, when the recovery system is active. The value of this parameter is in dollars because of the robot's logic. If your account's base currency is not in dollars (USD), then the profit will be in your actual base currency (EUR, GBP or anything else). By default, the value of this parameter is -1, which means that the value from our server will be used (it is visible in the EA's information box).

If you want to make your own experiments with the WallStreet Recovery Pro settings, we could give you some recommendations – a combination between very low value of AutoMM: 0.5 - 1, MaxRecoveryTrades: 3-5, RecoveryAfter: 200-500 pips and RecoveryMMC: 1-3, could provide great long-term stability of the system.

WallStreet GOLD Trader

We've developed WallStreet GOLD Trader as a bonus EA for all WallStreet FOREX Robot users. We have used the proven trading principle of the original WallStreet FOREX Robot and we've adapted it for trading GOLD (XAUUSD). The test results are very promising and we believe that WallStreet GOLD Trader will provide consistent long-term profits.

Please, bear in mind that some brokers are offering very disadvantageous spreads in XAUUSD, sometimes even higher than 20 cents. WallStreet GOLD Trader works best with spreads lower than 4 cents, which is normal for most of the reputable ECN brokers.

We have performed 99.99% quality REAL tick tests with real spreads, which are consistent with the "M1 open price only" back-tests, so you can use the "M1 open price only" back-testing method with confidence.

The main WallStreet GOLD Trader settings are identical with the WallStreet 2.0 Evolution settings, which are explained in this manual.

We do not recommend automatic risk settings greater than AutoMM=5, which is about 0.05 lots at \$1000 account equity. Before using the automatic money management function (AutoMM>0), please perform a backtest with your account balance and the desired AutoMM value! This is important, because some brokers are using different lots sizes for XAUUSD, which normally should be 100 000 ounces per lot. If you have any questions, please do not hesitate to contact us!

Advanced Time Management System

SETTINGS

These settings have been specially developed to help traders avoid certain hour periods during the trading week when the Forex market behaves more unpredictable.

MondayTrading true/false – enables trading on Monday.

MondayHoursForbidden – sets forbidden trading hours for Monday (applies only when MondayTrading is enabled). You can set several values between 0 and 23 separated with commas. For example, if you set MondayHoursForbidden=9,10,11 the EA will not trade from 9:00 till 11:59. The hour values for this parameter are related to your broker's server time (the Market Watch)!

TuesdayTrading true/false – enables trading on Tuesday.

TuesdayHoursForbidden – same as MondayHoursForbidden with the difference that you set forbidden hours for Tuesday.

WednesdayTrading true/false – enables trading on Wednesday.

WednesdayHoursForbidden – same as MondayHoursForbidden with the difference that you set forbidden hours for Wednesday.

ThursdayTrading true/false – enables trading on Thursday.

ThursdayHoursForbidden – same as MondayHoursForbidden with the difference that you set forbidden hours for Thursday.

FridayTrading true/false – enables trading on Friday.

FridayHoursForbidden – same as MondayHoursForbidden with the difference that you set forbidden hours for Friday.

SaturdayTrading and **SundayTrading true/false** – enables trading during Saturday and Sunday respectively. Due to big GMT offset, some brokers trade during weekends and for that reason we added these parameters as well.

NOTE: The Advanced Time Management System is not available in WallStreet ASIA Evo because it trades only during the Asian session (only a few hours). The Time Management System could be useless. Therefore, we have not integrated this system in WallStreet ASIA Evo.

RISK MANAGEMENT HINTS

Risk management is of fundamental importance in attaining optimum forex trading results. It pays to think carefully before deciding what percentage of your account to expose to risk in each individual transaction.

If your account is significant in extent and importance and if you do not wish to take unnecessary risk, then you should settle for **AutoMM** values between 1 and 5 percent risk per individual transaction. In such case, you may expect a return on investment in the order of 10 to 100 percent on an annual basis.

If your account is not significant in extent or importance, and if you can afford to assume significant risk, then you may select **AutoMM** values between 10 and 20 percent per individual transaction. In such case, you may expect a return on investment in the order of 200 and 1000 percent on an annual basis. Bear in mind, however, that the level of risk assumed means that the chance of losing the entire account increases.

In reality, perhaps the most widely assumed risk per individual transaction is 5 percent (AutoMM=5), and for a good reason. Assuming 5 percent risk and applying a good trading strategy, your chances of steady long-term profit are significant, while the risk of losing the entire account is minimised.

For example, if you have a USD 10,000 account, then:

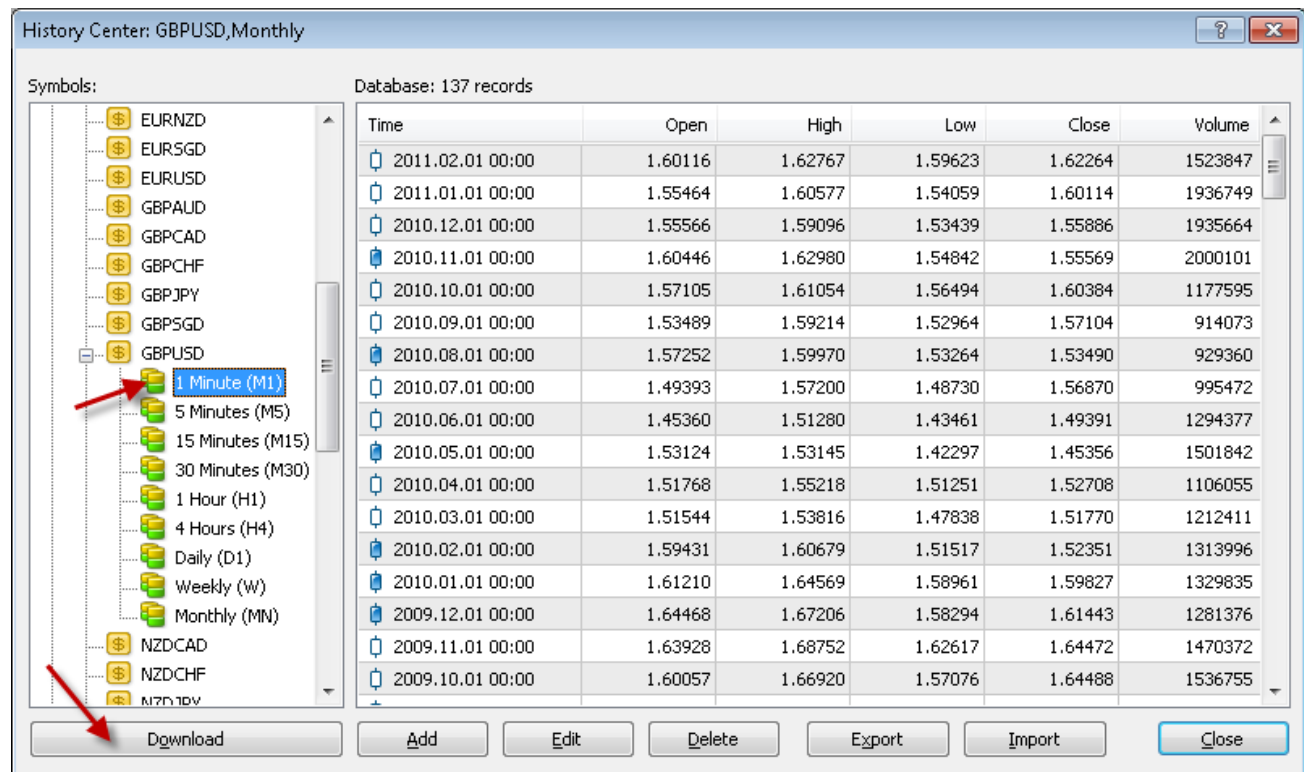
- If AutoMM=0, the EA will trade with volume = parameter FixedLots (defaults FixedLots=0.1)
- If AutoMM=2 (2 percent risk) the EA will open 0.2 lot positions (20,000)
- If AutoMM=5 (5 percent risk) the EA will open 0.5 lot positions (50,000)
- If AutoMM=10 (10 percent risk) the EA will open 1.0 lot positions (100,000)

HOW TO BACKTEST

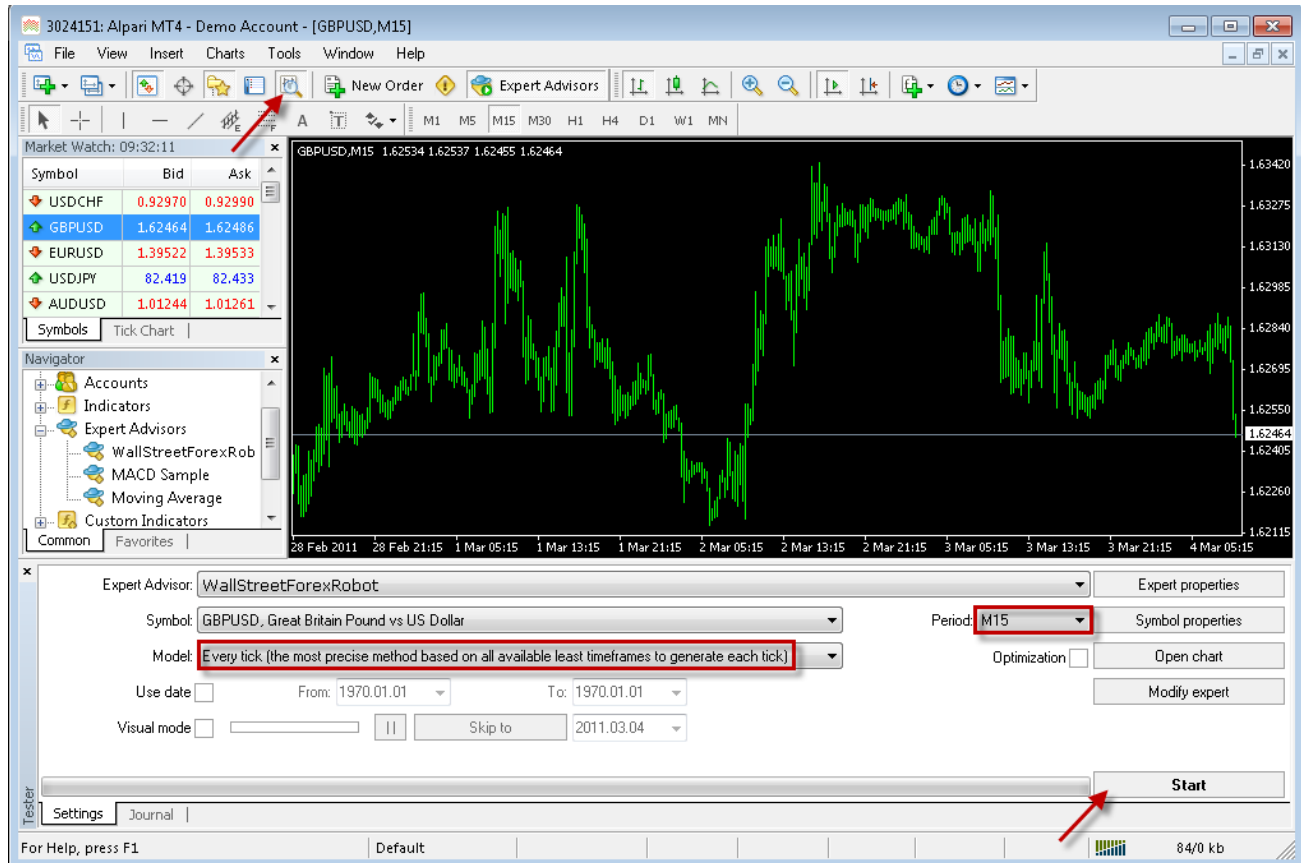
WallStreet 2.0 Evolution

Please, do not forget to activate your demo, or real account, even if you only wish to backtest WallStreet 2.0 Evolution!

If you wish to back-test WallStreet 2.0 Evolution, first you should download history from the MetaTrader history center: click *Tools* -> *History Center*, or press the "F2" key of the keyboard. In the list, find the currency pair that you wish to back-test and double click to expand it. Click "1 Minute (M1)" and then click "Download". When the download process is finished, double click on "5 Minutes (M5)" and "15 Minutes (M15)" to convert the M1 data. Close the "History Center" window.



To open the "Strategy Tester" window click the "Strategy Tester" button of the MetaTrader menu, or press "Ctrl+R" on the keyboard. In the "Strategy Tester" window chose "WallStreet 2.0 Evolution", chose one of the supported currency pairs, chose M15 timeframe, chose the method "Every tick ...", as shown below. Click "Start" to start the back-test.



The back-test by "Every tick" is the most precise, but it is very slow. If you wish to save time you can run the back-test on M1 timeframe by "Open price only ..." method and this will be correct too.

Important notice: If you make a back-test and at the same time you have WallStreet 2.0 Evolution attached on the chart in live trading mode, this can overload your MetaTrader4 terminal and can be a cause for a MetaTrader 4 terminal crash. Do not make back-tests on the same MetaTrader 4 terminal, which you use for live trading!

We strongly recommend that you operate a demo account before trading with real money. This will help you become familiar with the way WallStreet 2.0 Evolution operates before you commit genuine funds to a real money account.

EMAIL AND MOBILE PUSH NOTIFICATIONS



WallStreet 2.0 Evolution and the other bonus robots WallStreet ASIA Evo, WallStreet Recovery PRO Evo and WallStreet GOLD Trader come with EMAIL and Mobile PUSH Notification system

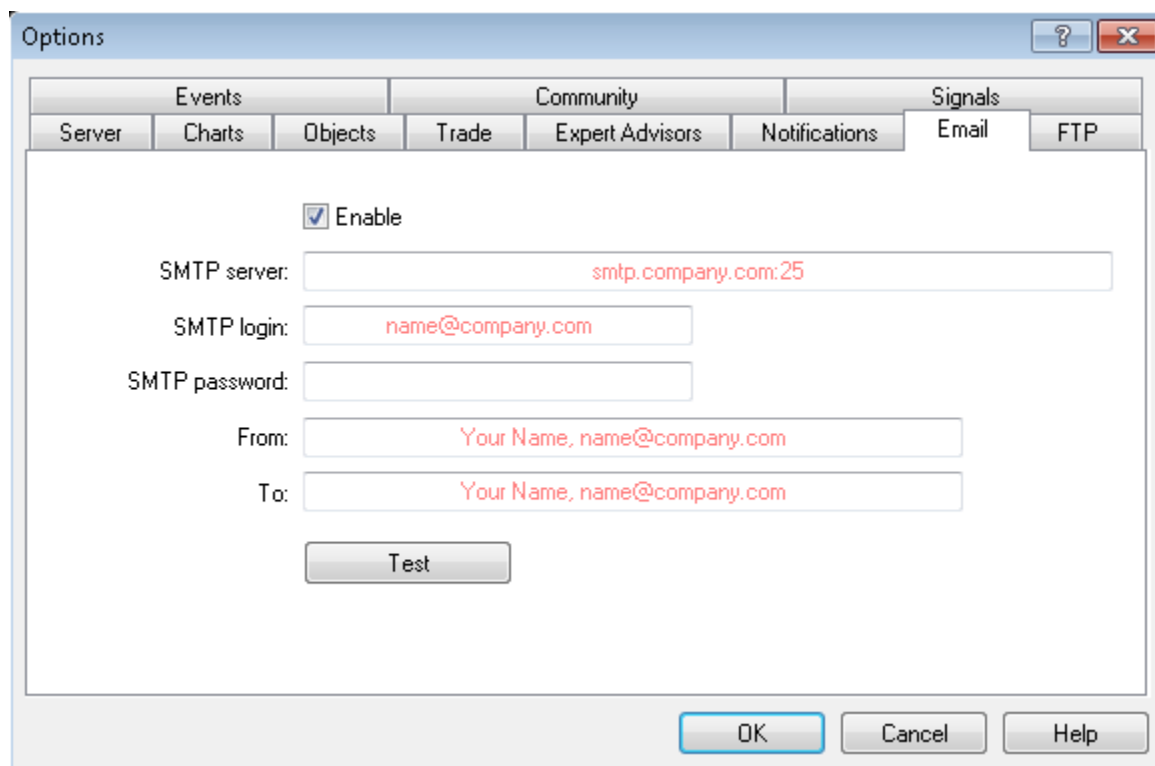
WallStreet 2.0 Evolution and the other bonus robots give traders a bit of freedom with the new notification system. Traders don't have to sit in front of their computer all day monitoring their traders. In spite of this freedom, traders like to know when a trading position has been opened or closed out. Now WallStreet 2.0 Evolution and the other bonus robots will inform you about all actions performed in your account. It is easy to set-up your terminal to receive these notifications. The robots can send email and push notifications to your mobile phone and inform you about all the trades. By default, these options are disabled. In order to enable these options, you have to set:

- **EMAIL_Notification=true**
- **PUSH_Notification=true**

To receive email messages, you have to configure the MT4 terminal properly too. The configuration must be done in:

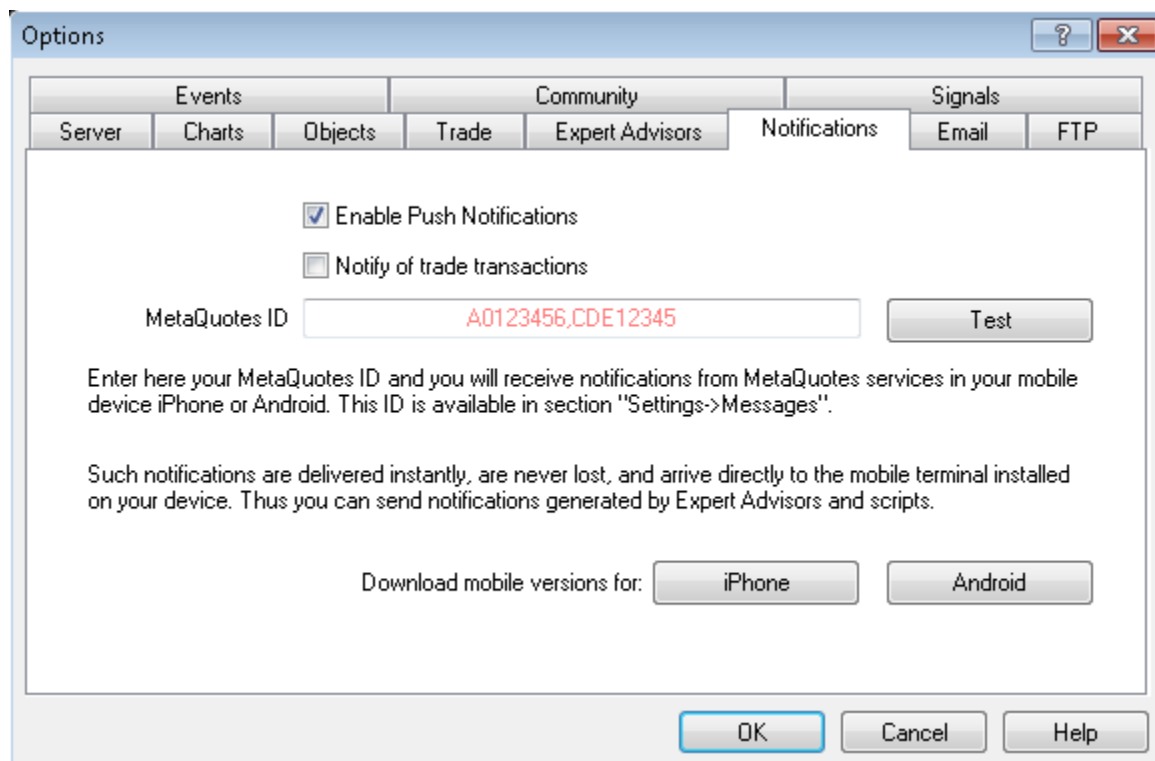
MT4 Menu -> Tools -> Options -> Email

Please check the next image:



To receive Mobile Push notifications, you have to enable Push Notifications and to enter your mobile terminal **MetaQuotes ID** here:

MT4 Menu -> Tools -> Options -> Notifications



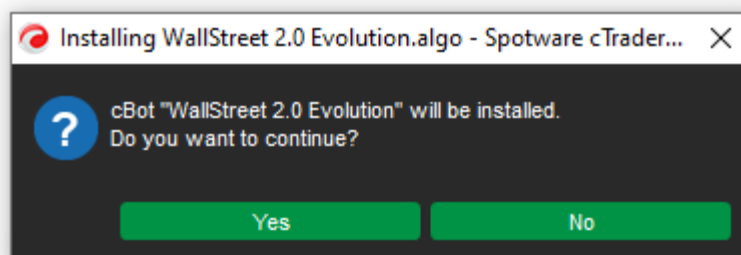
WallStreet 2.0 Evolution

for cTrader platform

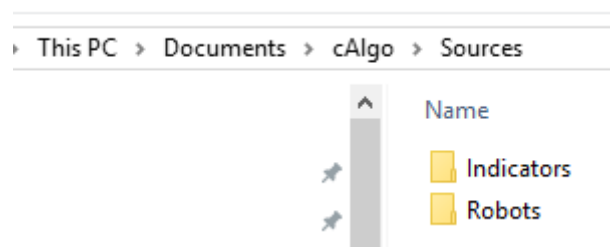
WallStreet 2.0 Evolution is also compatible with cTrader trading platform. cTrader platform is also very popular and most of the brokerage companies offer such trading platform. Forex robots for cTrader platform are called cBots. The filename extension for cBots is .algo.

In the member area download page there is a version of WallStreet 2.0 Evolution compatible with cTrader. You can download it and use on cTrader. Continue reading below to find how to install WallStreet 2.0 Evolution on your cTrader platform:

1. First way: The easiest method to install an algo file is to simply double-click your mouse on the file you want to install, what will happen next is that cTrader will start to open, if it is not already open, wait for this to complete. If you get any popups asking confirmation just confirm and continue. The algo file will be installed automatically.



2. Second way: If 1st way does not work, this would be because your operating system does not recognize algo files, you will need to open your documents folder using windows explorer and navigate to the Sources folder, here you will see two other folders, all you need to do now is open the relevant folder and copy/paste the algo file into this folder, this will automatically install or replace an existing file.



Forex robots must be placed on folder Robots. Indicators on folder Indicators.

Terms of Use and Risk Disclosure

U.S. GOVERNMENT REQUIRED DISCLAIMER

FOREX trading has large potential rewards, but also large potential risk. You must be aware of the risks and be willing to accept them in order to invest in the FOREX markets. Don't trade with money you can't afford to lose. This is neither a solicitation nor an offer to Buy/Sell currencies, futures or options. No representation is being made that any account will or is likely to achieve profits or losses similar to those discussed on this web site.

The past performance of any trading system or methodology is not necessarily indicative of future results.

Trading foreign exchange on margin carries a high level of risk and is not suitable for all investors. The high degree of leverage can work against you. As with all investments, you should not invest money that you cannot afford to lose. Before deciding to invest in foreign exchange, you must carefully consider your investment objectives, level of experience, and risk appetite. Additionally, you must be aware of all the risks associated with foreign exchange trading and seek advice from an independent financial advisor. Past results are not necessarily indicative of future success.

CFTC RULE 4.41 – HYPOTHETICAL OR SIMULATED PERFORMANCE RESULTS HAVE CERTAIN LIMITATIONS. UNLIKE AN ACTUAL PERFORMANCE RECORD, SIMULATED RESULTS DO NOT REPRESENT ACTUAL TRADING. ALSO, SINCE THE TRADES HAVE NOT BEEN EXECUTED, THE RESULTS MAY HAVE UNDER-OR-OVER COMPENSATED FOR THE IMPACT, IF ANY, OF CERTAIN MARKET FACTORS, SUCH AS LACK OF LIQUIDITY. SIMULATED TRADING PROGRAMS IN GENERAL ARE ALSO SUBJECT TO THE FACT THAT THEY ARE DESIGNED WITH THE BENEFIT OF HINDSIGHT. NO REPRESENTATION IS BEING MADE THAT ANY ACCOUNT WILL OR IS LIKELY TO ACHIEVE PROFIT OR LOSSES SIMILAR TO THOSE SHOWN.

By using **WallStreet 2.0 Evolution**, you acknowledge that you are familiar with these risks and that you are solely responsible for the outcomes of your decisions. We accept no liability whatsoever for any direct or consequential loss arising from the use of this product. It's to be noted carefully in this respect, that past results are not necessarily indicative of future performance.

Your purchase **WallStreet 2.0 Evolution** serves as your acknowledgement and representation that you have read and understand these TERMS OF USE and that you agree to be bound by such TERMS OF USE ("License Agreement").

Copyright Information

REPRODUCTION AND OR TRANSLATION OF ANY PART OF THIS WORK BY ANY MEANS ELECTRONIC OR MECHANICAL INCLUDING PHOTOCOPYING BEYOND THAT PERMITTED BY COPYRIGHT LAW WITHOUT THE PRIOR WRITTEN PERMISSION OF THE PUBLISHER IS UNLAWFUL.

Copyright © 2016 – WallStreet FOREX Robot 2.0 Evolution, www.wallstreet-forex.com, www.wallstreet-evolution.com - All Rights Reserved

Author: WallStreet FOREX Robot Team

Website: www.wallstreet-forex.com, www.wallstreet-evolution.com